

**EAST ALABAMA EMS, INC.**  
**EAST ALABAMA REGIONAL TRAUMA SYSTEM REPORT**  
**FY 2011 QUARTER THREE**



August 18, 2011

East Alabama EMS, Inc.

East Alabama Regional Trauma System

System Status & Performance Dashboard



---

## Table of Contents

Quarter 3 Synopsis.....	3
System volume to date – Oct. 6, 2009 thru June 30, 2011.....	4
System Volume FY 2011 Qtr 3 .....	5
Call Origination by County .....	6
Entry Criteria Statistics.....	7
Motor Vehicle Crash Statistics .....	8
Patient Transport Mode.....	9
Patient Destination .....	10
Patient Transfers.....	11
Trauma System Patient Outcomes .....	12
QI/QA Issues – FY 2011 QTR 3 .....	13
East Alabama Regional Trauma System Goals.....	14
Regional Trauma Advisory Committee (RTAC) .....	15

East Alabama EMS, Inc.

East Alabama Regional Trauma System

System Status & Performance Dashboard



---

## Quarter 3 Synopsis

During this quarter, which encompasses April 1, 2011 thru June 30, 2011, 263 patients were entered into the system. This is a slight decrease from same time last year. We shall continue to monitor these trends over time.

Motor vehicle crashes (MVCs) are still the leading cause of patient entry in the trauma system. Approximately 68 percent of patients entered this quarter are from motor vehicle crashes. We are trying to track more data involving MVCs. This quarter we added “Frontal Impact” (head-on collisions). The use of aircraft transport was about the same as last quarter; 35% versus 37% last quarter.

59 percent of trauma patients were treated by hospitals within the region. 29 percent of patients went to a Level 1 trauma center within the state. The other 12 percent went to a facility out of our region or out of state. Less than 9% of patients were transferred from a facility to a higher level of care.

We received a higher percentage of trauma patient reports (TPR’s) than past quarters. These provide us some information on patient outcomes. 61 percent of patients entered into the trauma system from Region 2 were admitted to various units and 39 percent were discharged from the emergency department. This over-triage indicator is close to the 40% benchmark that BREMSS (i.e. ATCC) uses for a need to review. June 2011 had the highest “over-triage” percentage this quarter.

The number of QI reports is currently at 9 percent of volume. We had several QI issues due to hospitals transferring patient without using the trauma system. We have been suggesting and offering re-training. The other issues relate to the timing of entering a patient and transport issues. The QI/QA committee, chaired by Dr. Christen, meets monthly to discuss each issue.

For more information, please contact us.

East Alabama EMS, Inc.  
P.O. Box 700  
58 Speedway Industrial Drive  
Lincoln, AL 35096

205.763.8400  
205.763.8402 Fax  
[eaems@centurytel.net](mailto:eaems@centurytel.net)  
[www.eastalabamaems.com](http://www.eastalabamaems.com)

John E. Blue, II, CEO  
E. Allan Pace, Trauma Coordinator  
Jennifer Lambert, Administrative Assistant

East Alabama EMS, Inc.

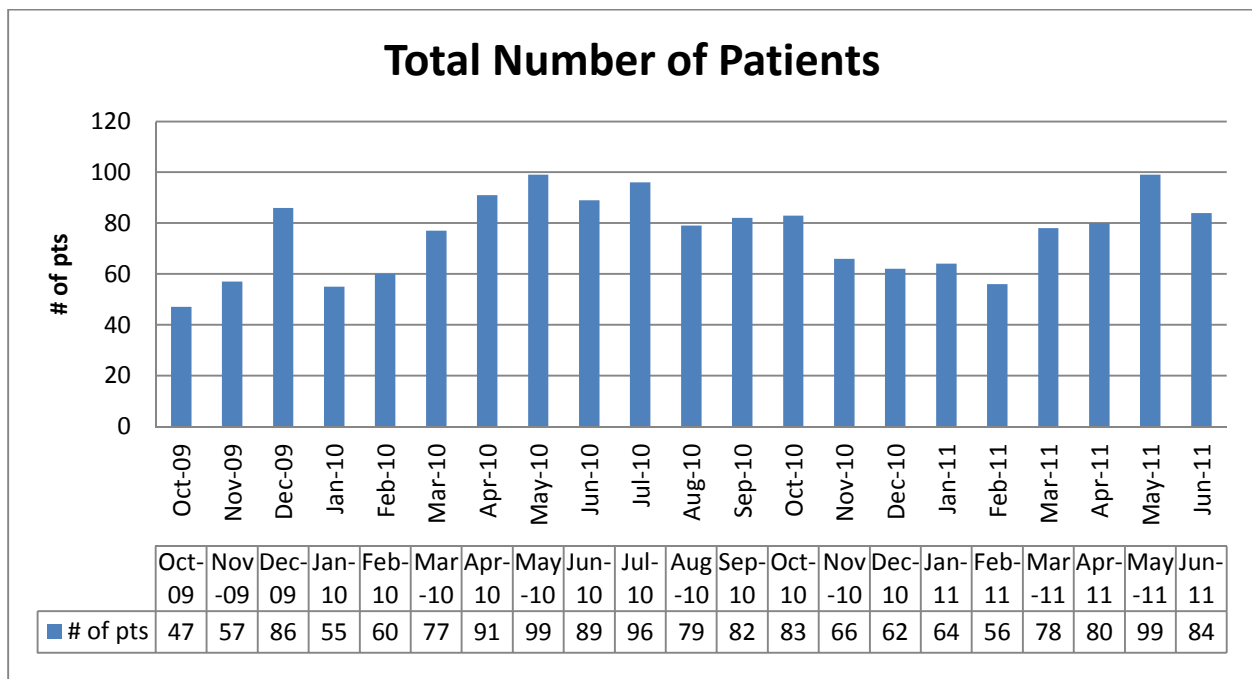
East Alabama Regional Trauma System

System Status & Performance Dashboard



**System volume to date – Oct. 6, 2009 thru June 30, 2011**

Total number of patients entered into the trauma system = 1,590



East Alabama EMS, Inc.

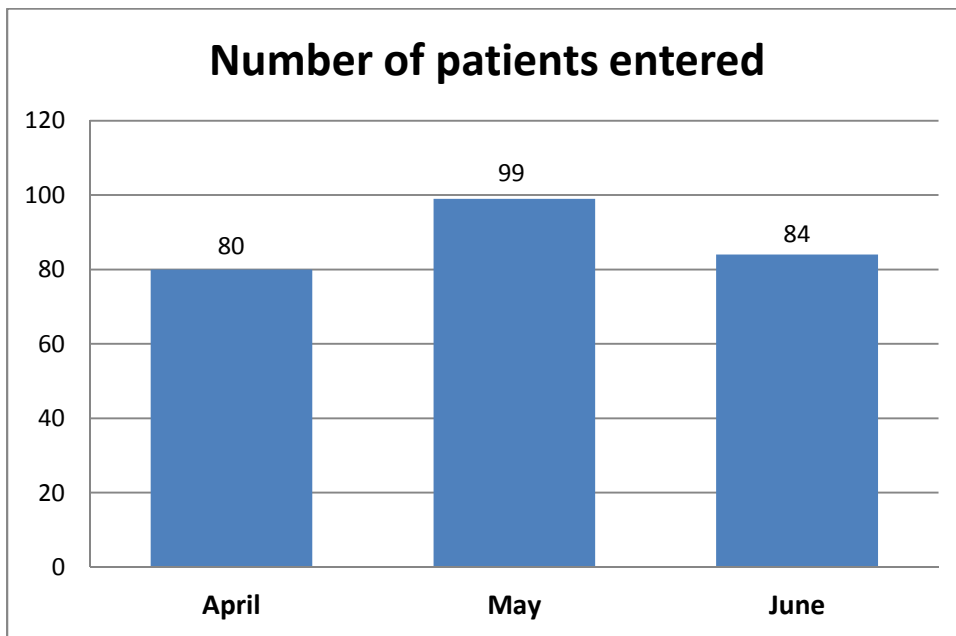
East Alabama Regional Trauma System

System Status & Performance Dashboard



### System Volume FY 2011 Qtr 3 (April-June 2011)

The total number of patients entered from this region into the Alabama Trauma System during this quarter



East Alabama EMS, Inc.

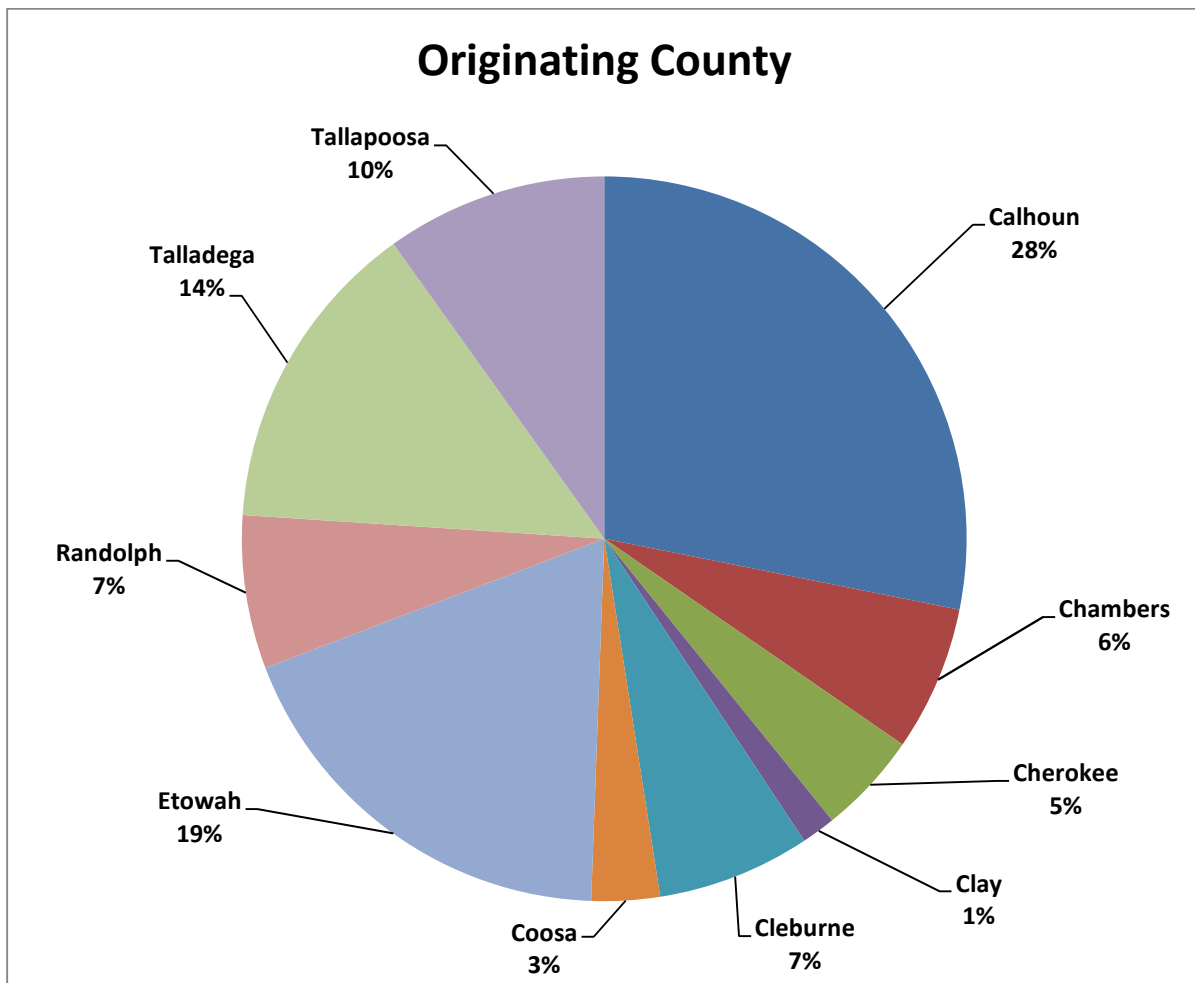
East Alabama Regional Trauma System

System Status & Performance Dashboard



## Call Origination by County – FY 2011 QTR 3 (April-June 2011)

Originating county for Region 2 trauma system patients



East Alabama EMS, Inc.

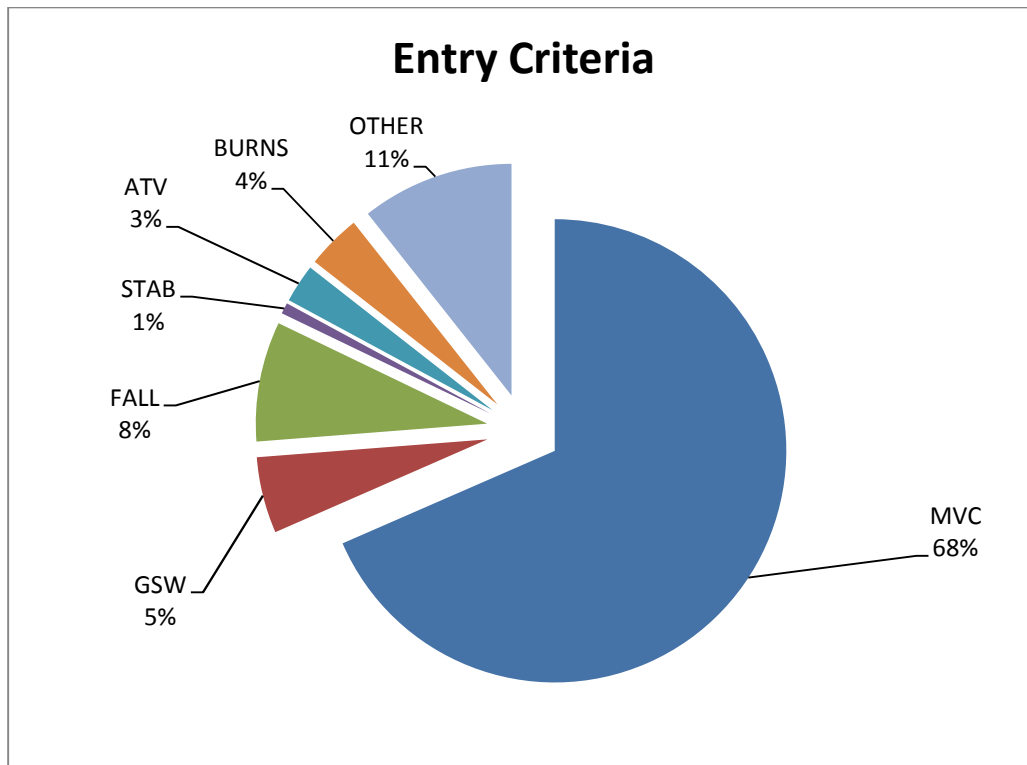
East Alabama Regional Trauma System

System Status & Performance Dashboard



**Entry Criteria Statistics** – FY 2011 QTR 3 (April-June 2011)

Type of accident trauma patients were involved in that prompted EMS or hospital to enter them into the trauma system

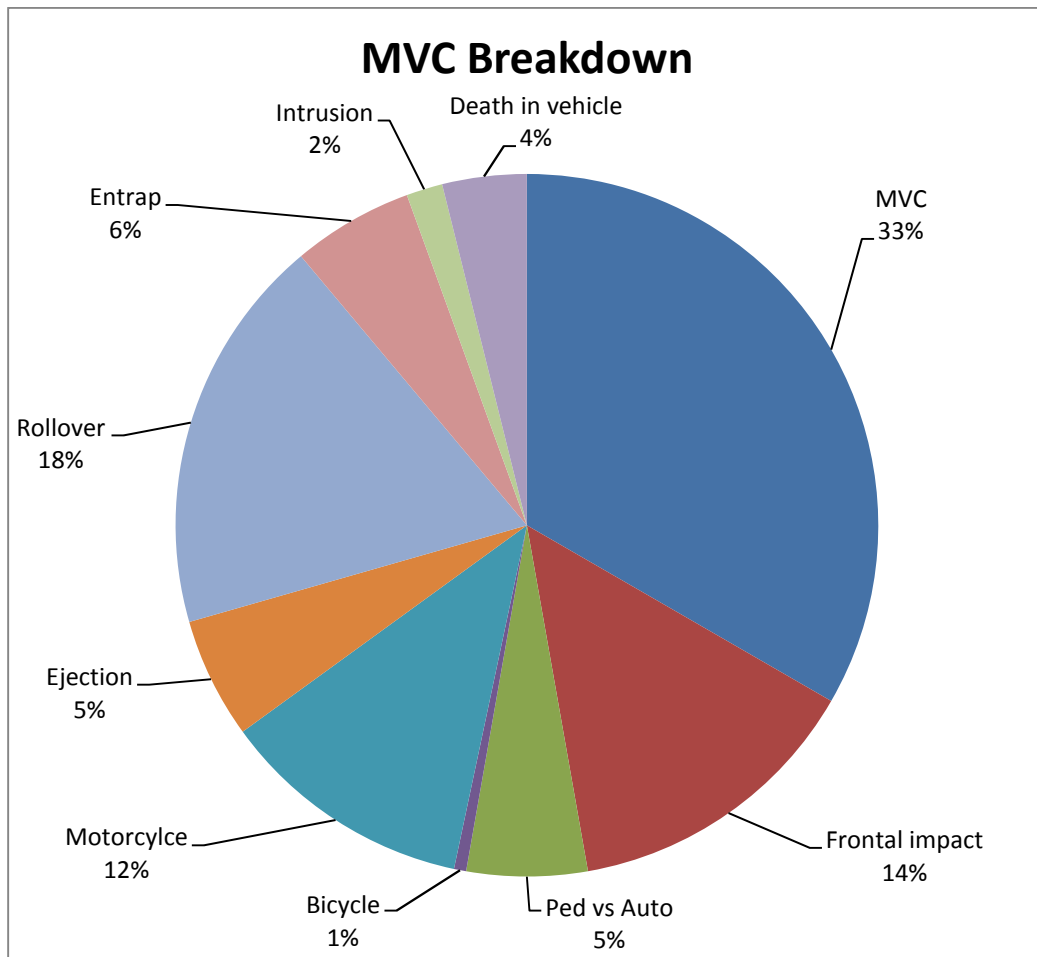


\*\*OTHER: This entry criteria includes incidents such as industrial accidents, assaults, boating accidents, lawnmower accidents.



### Motor Vehicle Crash Statistics – FY 2011 QTR 3 (April-June 2011)

Patients entered into the trauma system involved in a MVC



East Alabama EMS, Inc.

East Alabama Regional Trauma System

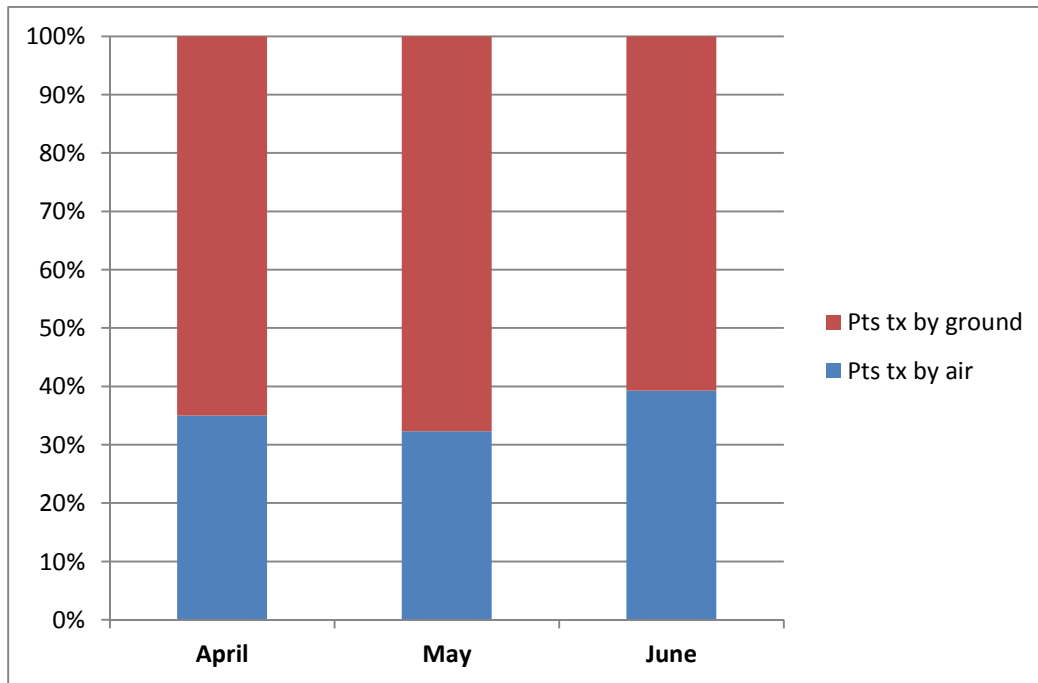
System Status & Performance Dashboard



**Patient Transport Mode** – FY 2011 QTR 3 (April-June 2011)

Patients transported by ground units versus air medical units

**Transportation Mode – Air vs Ground**



East Alabama EMS, Inc.

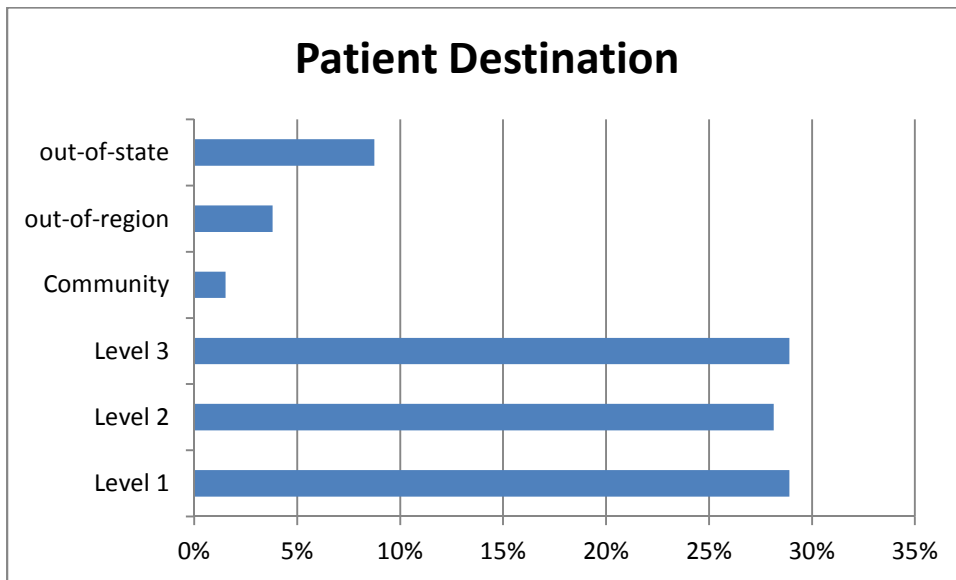
East Alabama Regional Trauma System

System Status & Performance Dashboard



### Patient Destination – FY 2011 QTR 3 (April-June 2011)

Trauma system patients from Region 2 transported to various hospital destinations



East Alabama EMS, Inc.

East Alabama Regional Trauma System

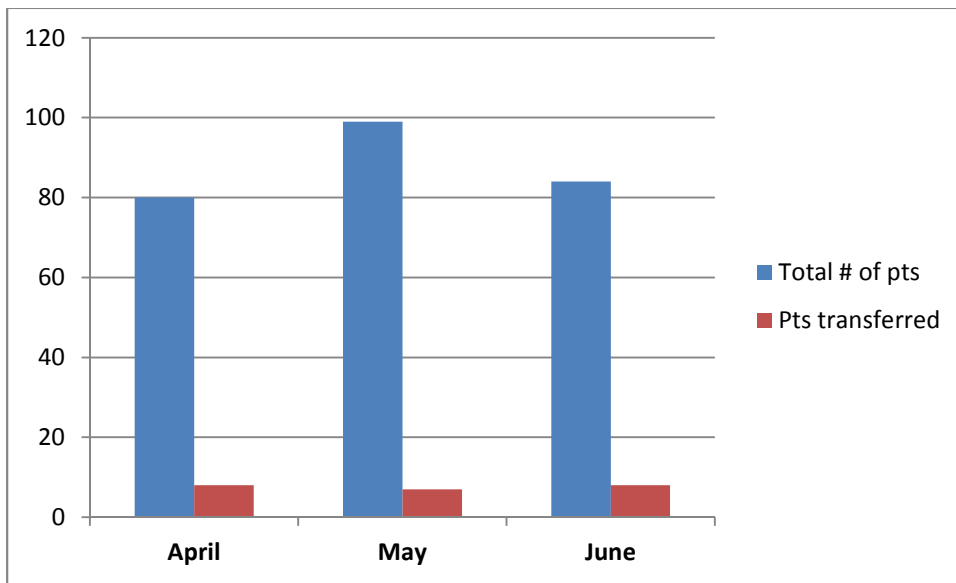
System Status & Performance Dashboard



**Patient Transfers** – FY 2011 QTR 3 (April-June 2011)

Trauma patients from Region 2 taken to a hospital within the region and then transferred to a higher level trauma center

**Patients Transferred**

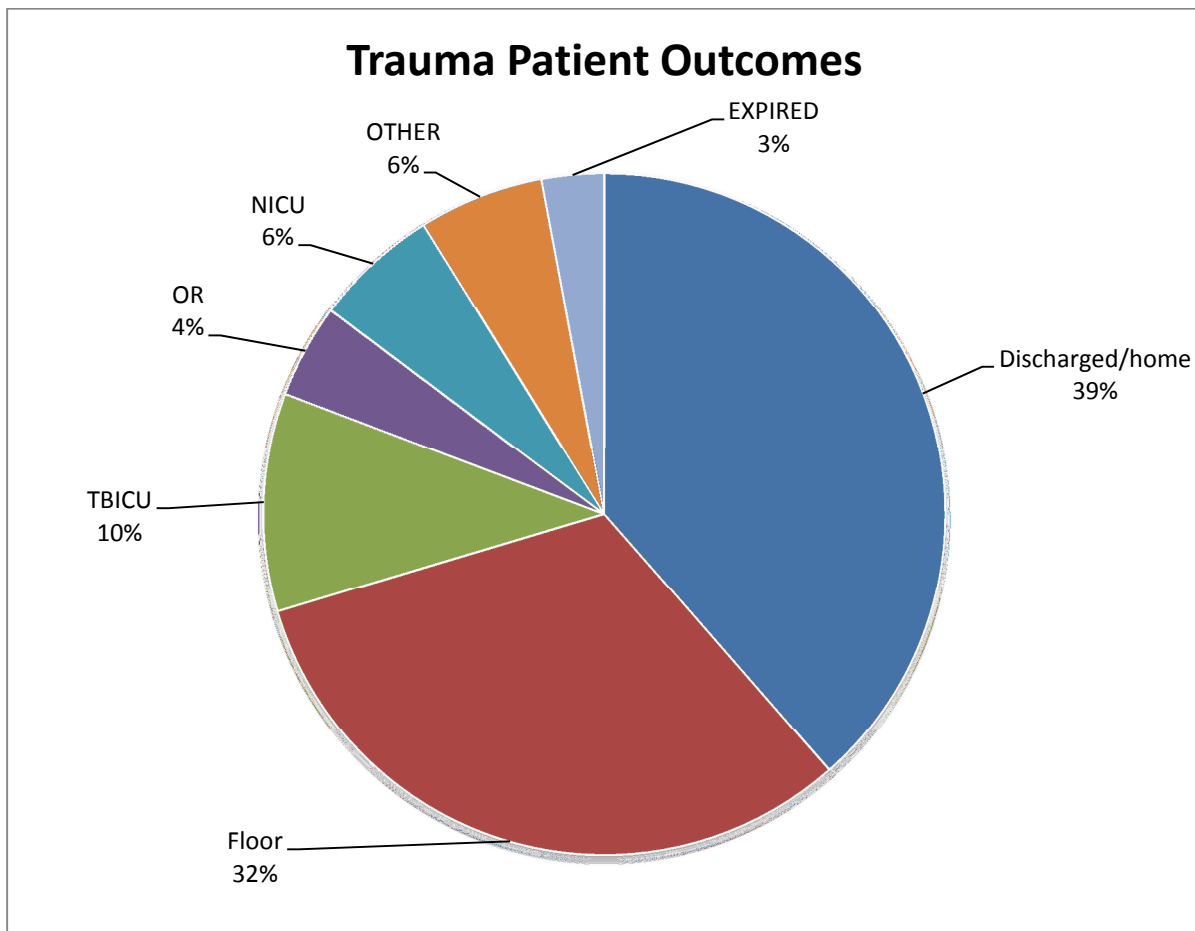


\*This does not include any patients taken to closest ER because they were unstable and then transferred



### Trauma System Patient Outcomes – FY 2011 QTR 3 (April-June 2011)

Of the total number of patients entered from Region 2, 58% of the trauma patient reports were returned.



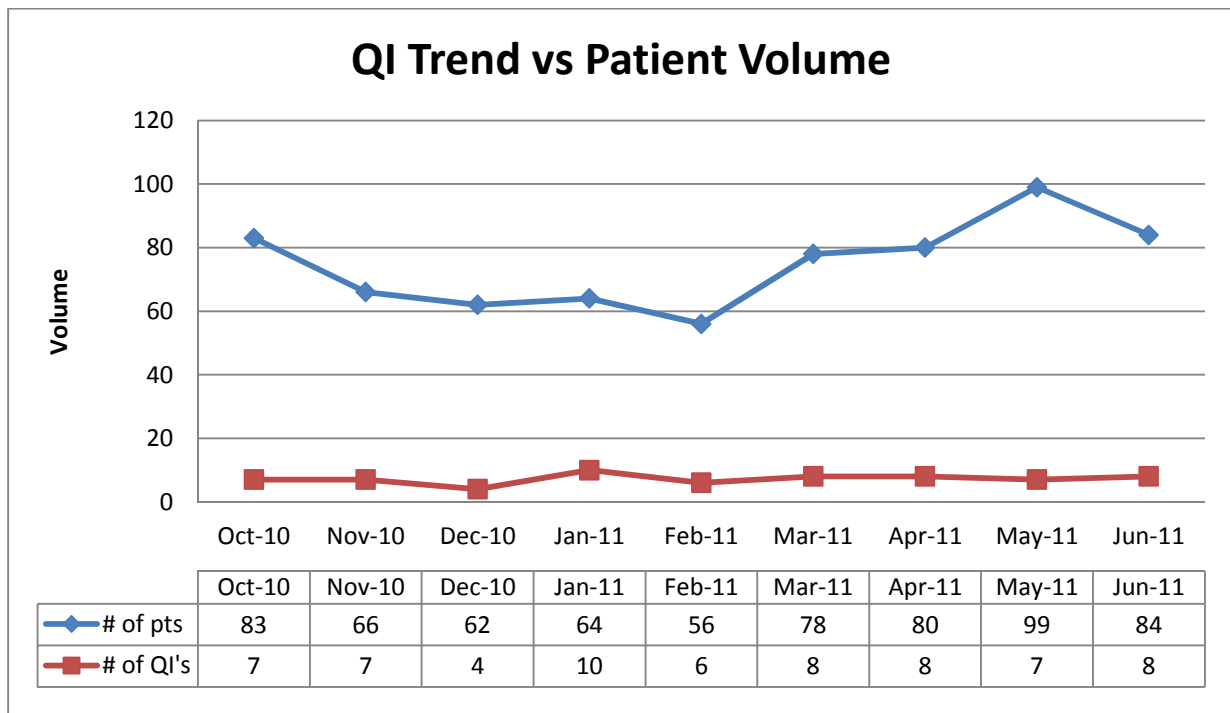
East Alabama EMS, Inc.

East Alabama Regional Trauma System

System Status & Performance Dashboard



**QI/QA Issues** – FY 2011 QTR 3



East Alabama EMS, Inc.

East Alabama Regional Trauma System

System Status & Performance Dashboard



---

## East Alabama Regional Trauma System Goals

- 1) Decrease Q.I. incidents to 6% per year during FY 2011 (currently at 10% ytd)
- 2) Increase the number of TPRs (Trauma Patient Reports) returned to the agency to 50% during FY 2011 (currently at 54% ytd)
- 3) Offer a trauma system training class once per quarter
- 4) Hold a meeting for ER Nurse Managers in our region once per quarter
- 5) Hold RTAC meetings once per quarter
- 6) Present trauma system update at service provider meetings each quarter and have open discussion

East Alabama EMS, Inc.

East Alabama Regional Trauma System

System Status & Performance Dashboard



---

## Regional Trauma Advisory Committee (RTAC)

### PHYSICIANS

Charles L. Newman, M.D., Chairman of East Alabama RTAC  
Riverview / GRMC

Neil L. Christen, M.D., Vice-chairman of East Alabama RTAC  
Regional Medical Director

Gordon T. Hardy, M.D.  
Anniston Orthopedic Associates

Lucian Newman, III, M.D.  
The Surgery Clinic, LLC

Steven A. Isbell, M.D.  
Walker & Isbell PA

James G. White, III, M.D.  
Northeast AL Neurological Services

Ron Shiver, M.D.  
ED Medical Director  
Lanier Health Services

John Valente, M.D.  
Regional Medical Center

Michelle Goldhagen, M.D.  
Russell Medical Center

Rodney Snead, M.D.  
C.A.R.E.S.

David Roberts, M.D.  
Citizens Hospital

## East Alabama EMS, Inc.

East Alabama Regional Trauma System

System Status & Performance Dashboard



---

### **PHYSICIANS continued**

Lewis Sellers, M.D.  
Regional Medical Center

Henry Ruiz, M.D.  
Ruiz Neurosurgery Clinic

Howard McVeigh M.D.  
Chair, BOD East Alabama EMS

Buddy Smith, M.D.  
Clay County Hospital

### **HOSPITAL REPRESENTATIVES**

Patrick Trammell, CEO  
Cherokee Medical Center

Linda Jordan, Administrator  
Clay County Hospital

Glenn Sisk, CEO  
Coosa Valley Medical Center

Stephen Pennington, CEO  
Gadsden Regional Medical Center

Jim Edmonson, CEO  
Jacksonville Medical Center

Agnes Wages, Administrator  
Lake Martin Community Hospital

Doug Dewberry, CEO  
Lanier Health Services

David McCormack, CEO  
Northeast Alabama Regional Medical Center

Lloyd Ford, CEO  
Riverview Regional Medical Center

East Alabama EMS, Inc.

East Alabama Regional Trauma System

System Status & Performance Dashboard



---

**HOSPITAL REPRESENTATIVES continued**

Jim Peace, Administrator  
Russell Medical Center

Joel Taylor, Administrator  
Citizens Baptist

John Gallagher, CEO  
Stringfellow Memorial Hospital

Richard Daniel, Administrator  
Wedowee Hospital

**PREHOSPITAL EMS REPRESENTATIVES**

Shane Parker, EMT-P  
LifeSaver/Omniflight

Matt Knight, EMT-P  
Emergency Medical Transport

Johnny Warren  
Anniston EMS

**ADPH REPRESENTATIVE**

Dr. Williamson (Dr. Crawford, State EMS Medical Director)