

EAST ALABAMA EMS, INC.
EAST ALABAMA REGIONAL TRAUMA SYSTEM REPORT
FY 2011 QUARTER TWO



May 5, 2011

East Alabama EMS, Inc.

East Alabama Regional Trauma System

System Status & Performance Dashboard



Table of Contents

Quarter 2 Synopsis.....	3
System volume to date – Oct 2009 thru March 2011.....	4
System Volume FY 2011 Qtr 2	5
Call Origination Location.....	6
Entry Criteria Statistics.....	7
Patient Transport Mode.....	8
Patient Destination	9
Patient Transfers.....	10
Trauma Patient Outcomes	11
East Alabama Regional Trauma System Goals.....	12
Regional Trauma Advisory Committee (RTAC)	13

East Alabama EMS, Inc.

East Alabama Regional Trauma System

System Status & Performance Dashboard



Quarter 2 Synopsis

During this quarter, which encompasses Jan 2011 thru March 2011, 198 patients were entered into the system. This is a slight increase from same time last year. We plan to monitor these trends as we go forward.

Motor vehicle crashes are still the leading cause of patient entry in the trauma system. Approximately 70 percent of patients entered this quarter are from motor vehicle crashes. This quarter saw an increase, percentage wise, in the use of aircraft transport. It was up to 37% versus 25% last quarter.

52 percent of trauma patients were treated by hospitals within the region. 39 percent of patients went to a Level 1 trauma center within the state. The other 9 percent went to a facility out of our region or out of state.

73 percent of patients placed entered into the trauma system from Region 2 were admitted to various units. Only 27 percent were discharged from the emergency department. This over-triage indicator is much less than the 40% benchmark that BREMSS (i.e. ATCC) uses for a need to review.

The number of QI reports is currently at 10 percent of volume. We had several QI issues due to hospitals sending a patient to UAB without using the trauma system. We have been suggesting and offering re-training. The other issues relate to the timing of entering a patient and transport issues.

The trauma centers and ATCC have done a better job at getting trauma patient reports (TPRs) sent back to us. We have gotten over 56% returned this quarter compared to 38% last quarter.

For more information, please contact us.

East Alabama EMS, Inc.

P.O. Box 700

58 Speedway Industrial Drive

Lincoln, AL 35096

205.763.8400

205.763.8402 Fax

eaems@centurytel.net – email

eaems.com – website

John E. Blue, II, CEO

E. Allan Pace, Trauma Coordinator

Jennifer Lambert, Administrative Assistant

East Alabama EMS, Inc.

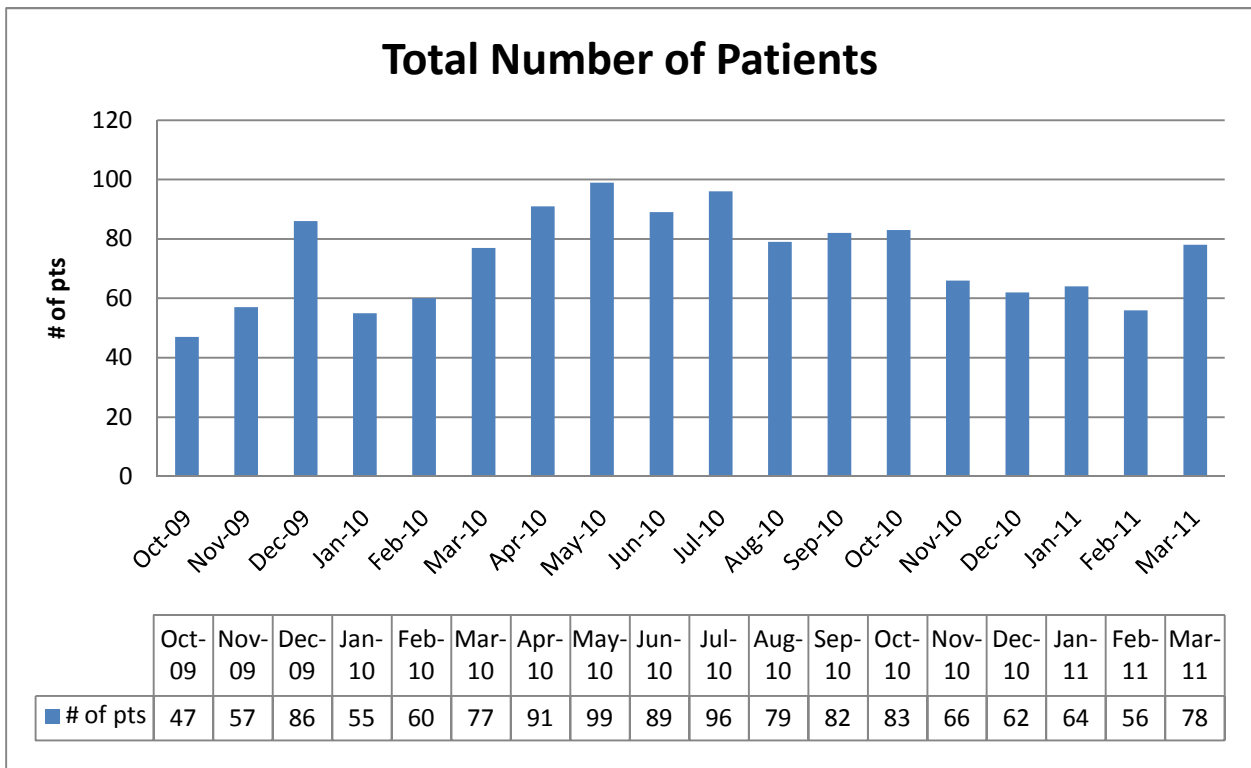
East Alabama Regional Trauma System

System Status & Performance Dashboard



System volume to date – Oct 2009 thru March 2011

Total number of patients entered into the trauma system = 1,327



East Alabama EMS, Inc.

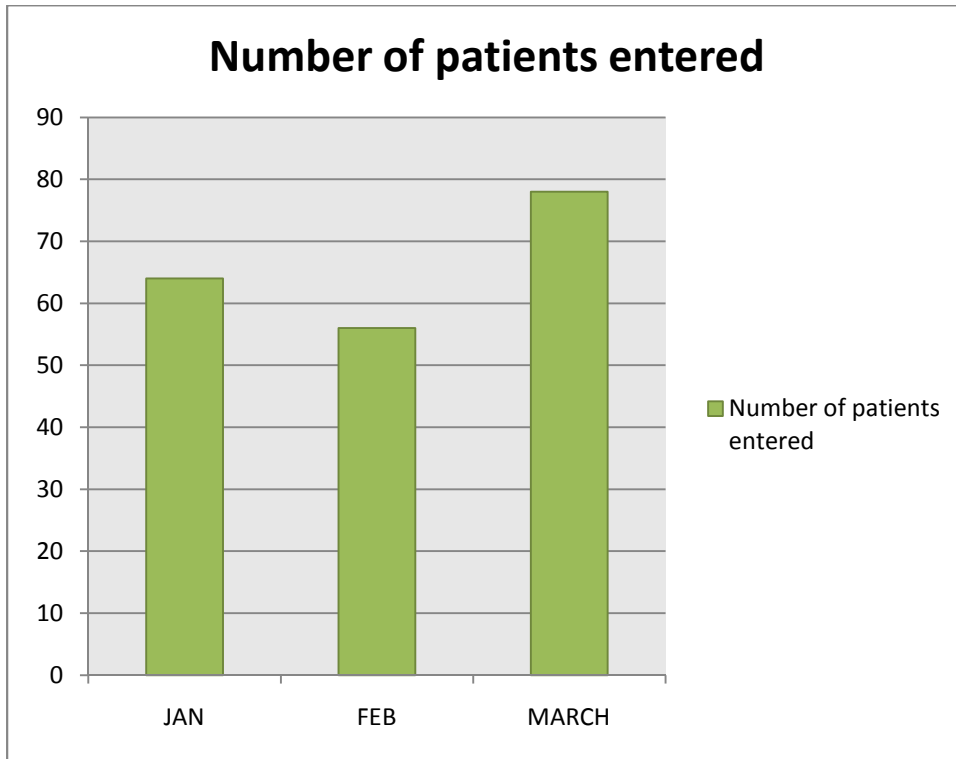
East Alabama Regional Trauma System

System Status & Performance Dashboard



System Volume FY 2011 Qtr 2 (Jan-March 2011)

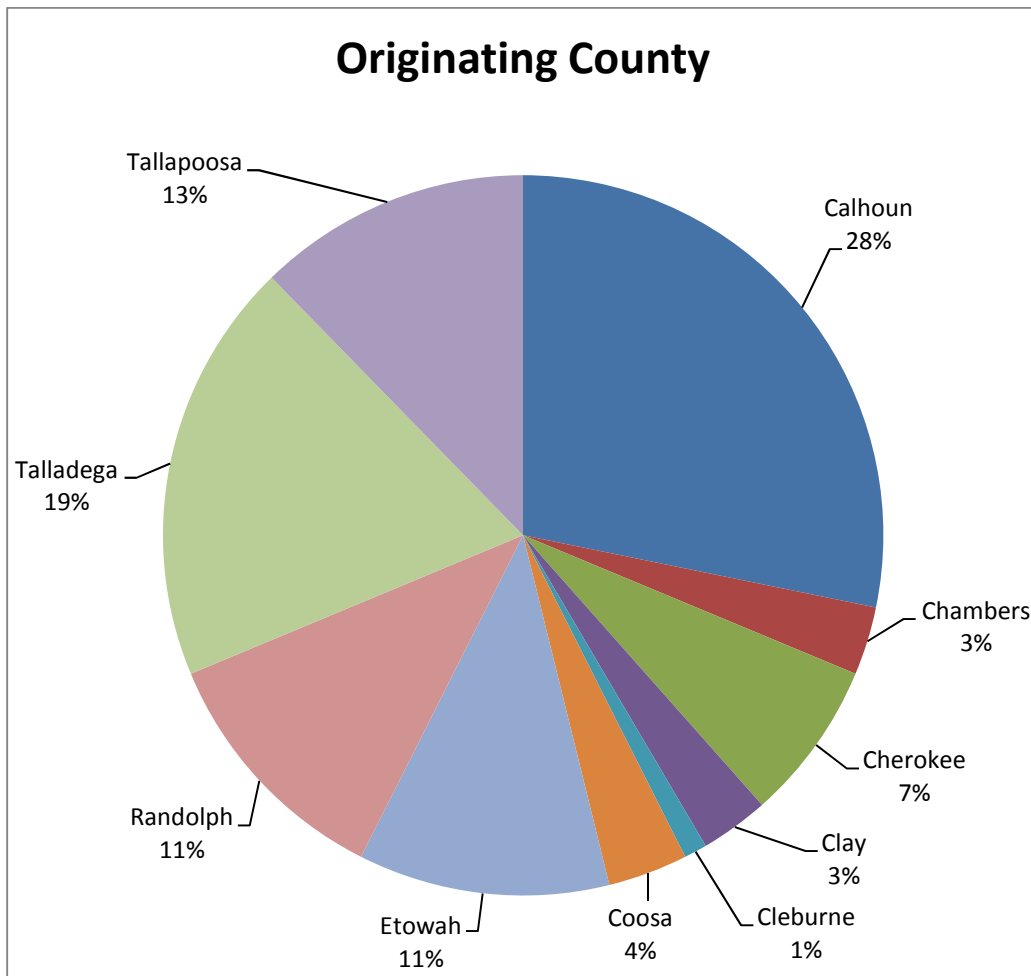
The total number of patients entered from this region into the Alabama Trauma System during this quarter





Call Origination Location – FY 2011 QTR 2 (Jan-March 2011)

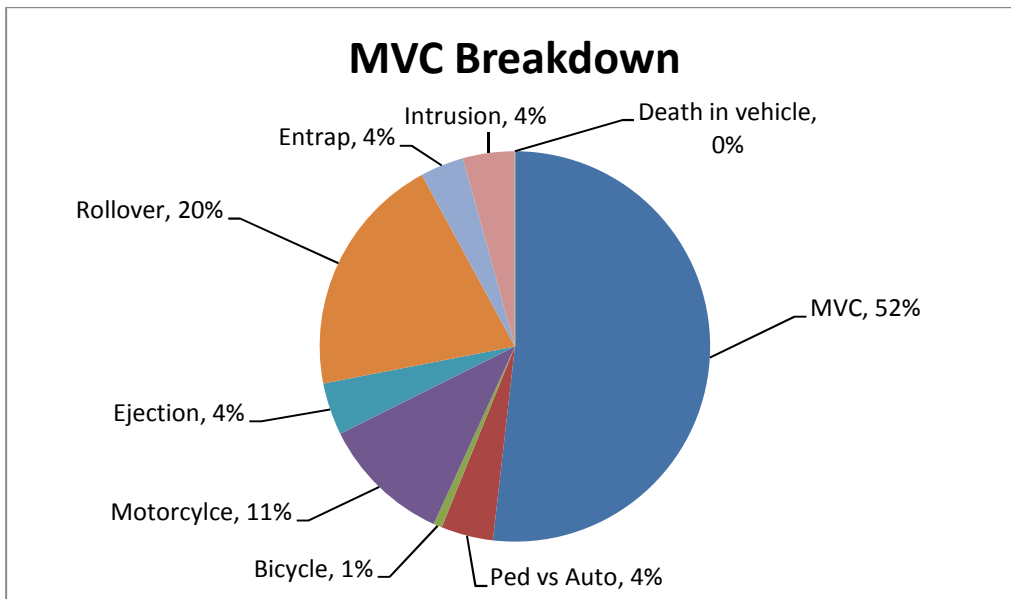
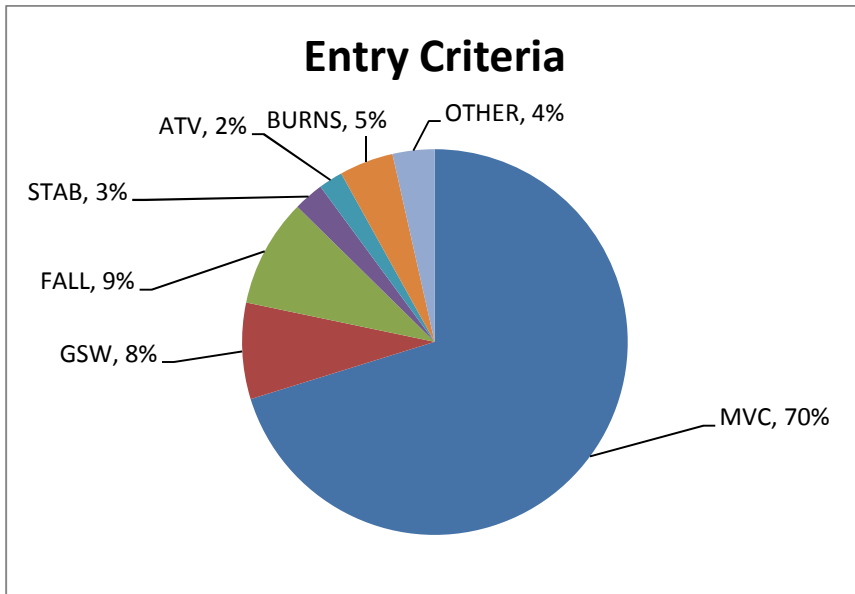
Originating county for Region 2 trauma system patients





Entry Criteria Statistics – FY 2011 QTR 2 (Jan-March 2011)

Type of accident trauma patients were involved in that prompted EMS or hospital to enter them into the trauma system



East Alabama EMS, Inc.

East Alabama Regional Trauma System

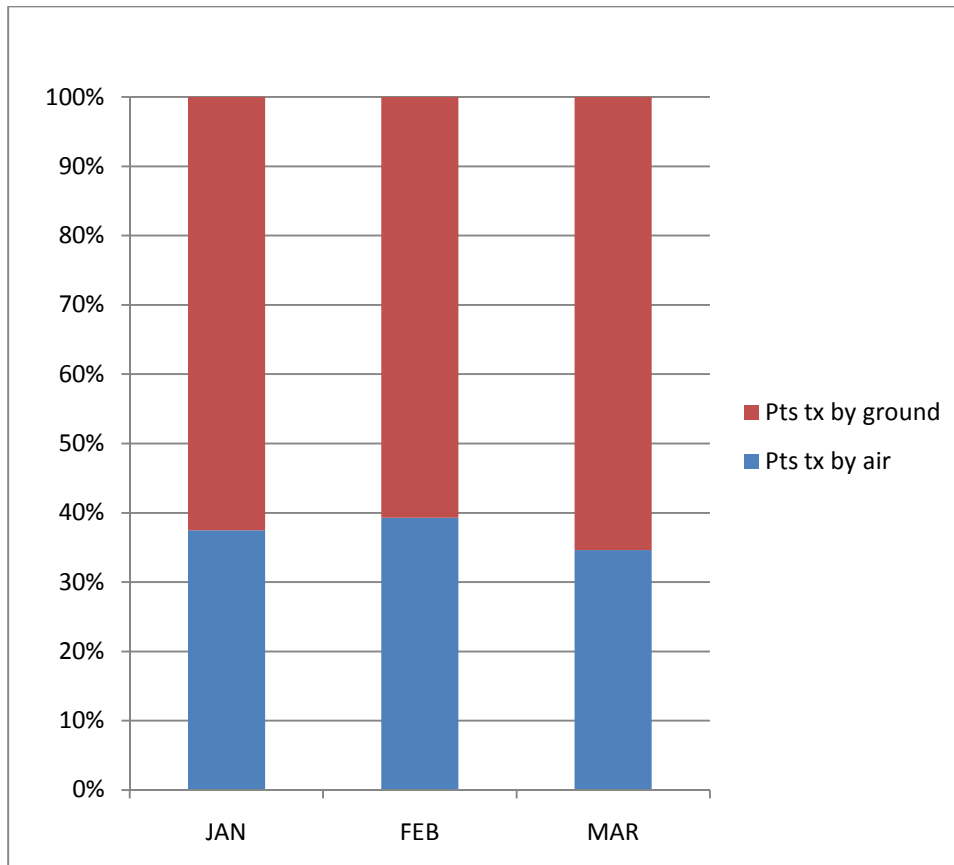
System Status & Performance Dashboard



Patient Transport Mode – FY 2011 QTR 2 (Jan-March 2011)

Patients transported by ground units versus air medical units

Transportation Mode – Air vs Ground



East Alabama EMS, Inc.

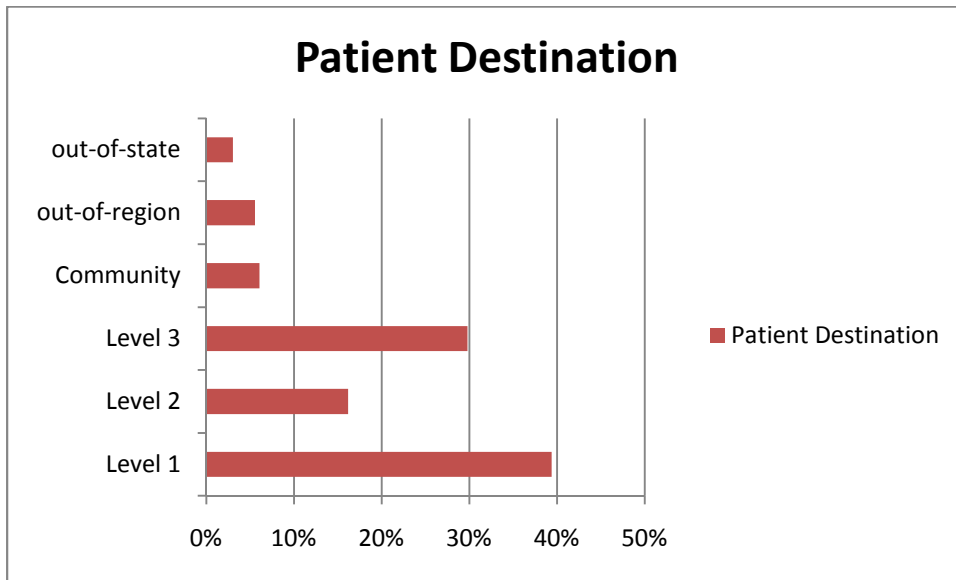
East Alabama Regional Trauma System

System Status & Performance Dashboard



Patient Destination – FY 2011 QTR 2 (Jan-March 2011)

Trauma system patients from Region 2 transported to various hospital destinations



East Alabama EMS, Inc.

East Alabama Regional Trauma System

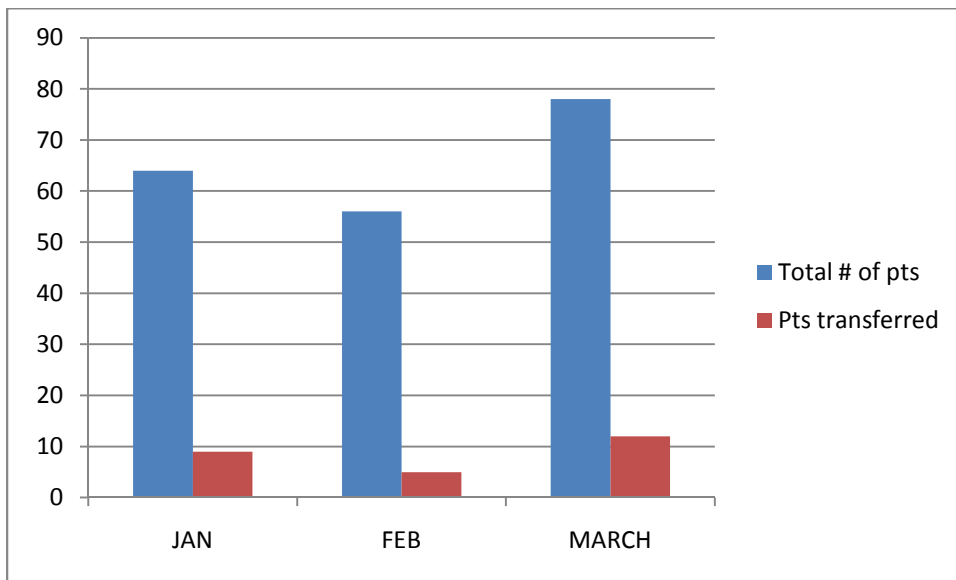
System Status & Performance Dashboard



Patient Transfers – FY 2011 QTR 2 (Jan-March 2011)

Trauma patients from Region 2 taken to a hospital within the region and then transferred to a higher level trauma center

Patients Transferred



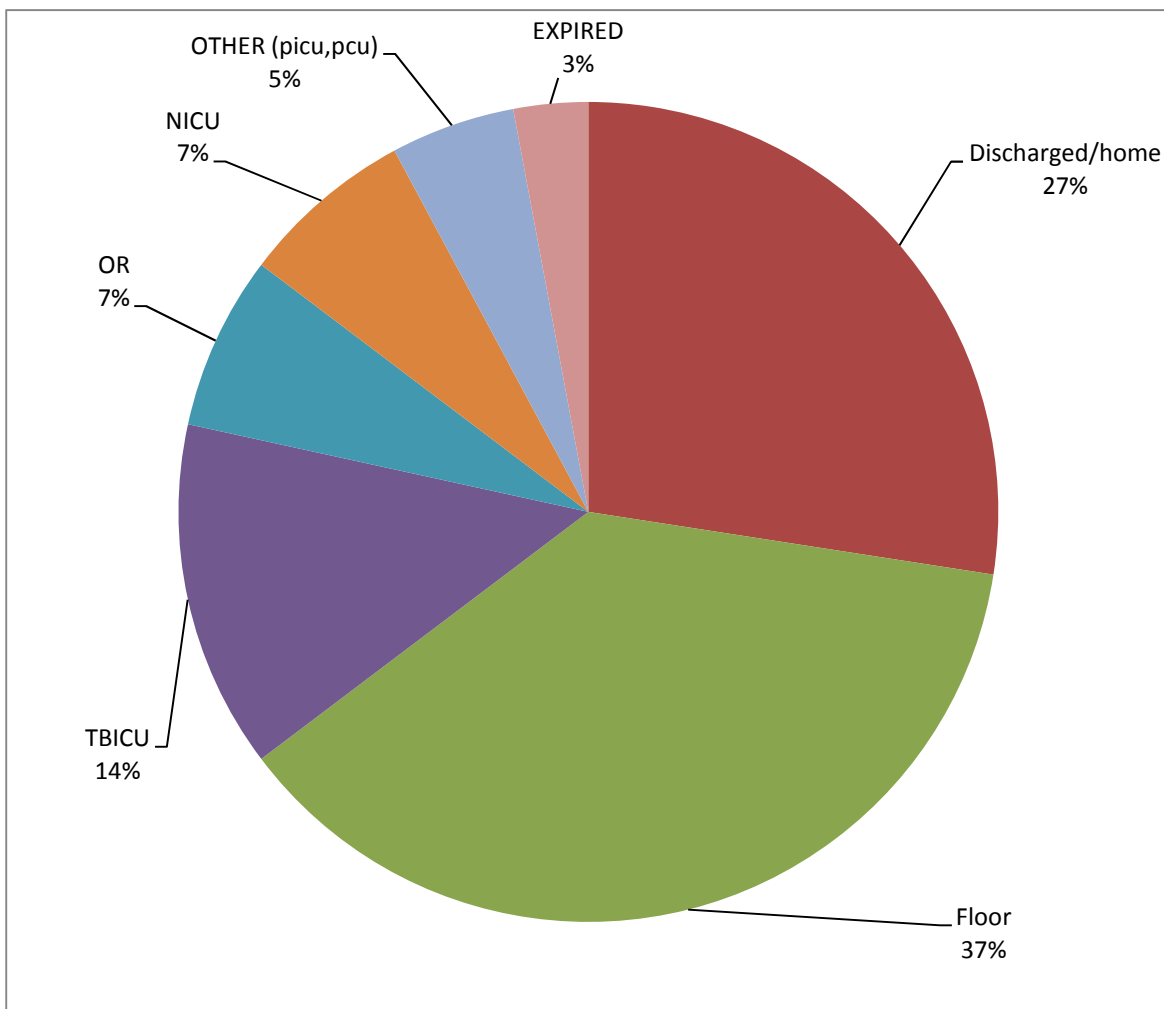
*This does not include any patients taken to closest ER because they were unstable and then transferred



Trauma Patient Outcomes – FY 2011 QTR 2 (Jan-March 2011)

Of the total number of patients entered from Region 2, 56% of the trauma patient reports were returned.

Trauma Patient Outcomes



East Alabama EMS, Inc.

East Alabama Regional Trauma System

System Status & Performance Dashboard



East Alabama Regional Trauma System Goals

- 1) Decrease Q.I. incidents to 6% per year during FY 2011 (currently at 10% ytd)
- 2) Increase the number of TPRs (Trauma Patient Reports) returned to the agency to 50% during FY 2011 (currently at 47% ytd)
- 3) Offer a trauma system training class once per quarter
- 4) Hold a meeting for ER Nurse Managers in our region once per quarter
- 5) Hold RTAC meetings once per quarter
- 6) Present trauma system update at service provider meetings each quarter and have open discussion

East Alabama EMS, Inc.

East Alabama Regional Trauma System

System Status & Performance Dashboard



Regional Trauma Advisory Committee (RTAC)

PHYSICIANS

Charles L. Newman, M.D., Chairman of East Alabama RTAC
Riverview / GRMC

Neil L. Christen, M.D., Vice-chairman of East Alabama RTAC
Regional Medical Director

Gordon T. Hardy, M.D.
Anniston Orthopedic Associates

Lucian Newman, III, M.D.
The Surgery Clinic, LLC

Steven A. Isbell, M.D.
Walker & Isbell PA

James G. White, III, M.D.
Northeast AL Neurological Services

Ron Shiver, M.D.
ED Medical Director
Lanier Health Services

John Valente, M.D.
Regional Medical Center

Michelle Goldhagen, M.D.
Russell Medical Center

Rodney Snead, M.D.
C.A.R.E.S.

David Roberts, M.D.
Citizens Hospital

Lewis Sellers, M.D.
Regional Medical Center

East Alabama EMS, Inc.

East Alabama Regional Trauma System

System Status & Performance Dashboard



PHYSICIANS continued

Henry Ruiz, M.D.
Ruiz Neurosurgery Clinic

Howard McVeigh M.D.
Chair, BOD East Alabama EMS

Buddy Smith, M.D.
Clay County Hospital

HOSPITAL REPRESENTATIVES

Patrick Trammell, CEO
Cherokee Medical Center

Linda Jordan, Administrator
Clay County Hospital

Glenn Sisk, CEO
Coosa Valley Medical Center

Stephen Pennington, CEO
Gadsden Regional Medical Center

Jim Edmonson, CEO
Jacksonville Medical Center

Agnes Wages, Administrator
Lake Martin Community Hospital

Doug Dewberry, CEO
Lanier Health Services

David McCormack, CEO
Northeast Alabama Regional Medical Center

Lloyd Ford, CEO
Riverview Regional Medical Center

East Alabama EMS, Inc.

East Alabama Regional Trauma System

System Status & Performance Dashboard



HOSPITAL REPRESENTATIVES contiued

Jim Peace, Administrator
Russell Medical Center

Joel Taylor, Administrator
Citizens Baptist

John Gallagher, CEO
Stringfellow Memorial Hospital

Richard Daniel, Administrator
Wedowee Hospital

PREHOSPITAL EMS REPRESENTATIVES

Shane Parker, EMT-P
LifeSaver/Omniflight

Matt Knight, EMT-P
Emergency Medical Transport

Johnny Warren
Anniston EMS

ADPH REPRESENTATIVE

Dr. Williamson (Dr. John Campbell)